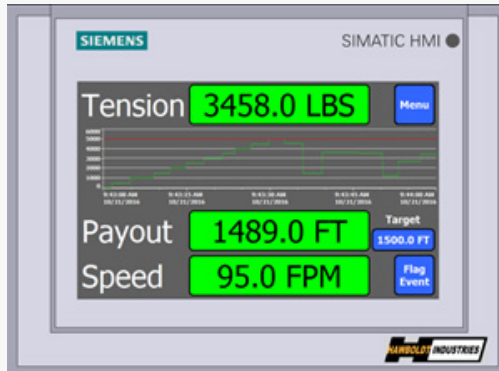


HAWBOLDT INDUSTRIES

Designed. Built. Marine.

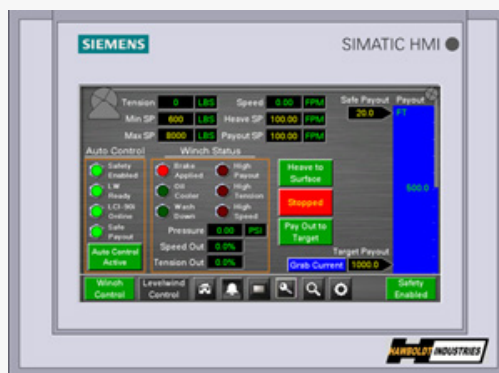
HAWBOLDT WINCH PRO COMMANDER *HMI Controls*



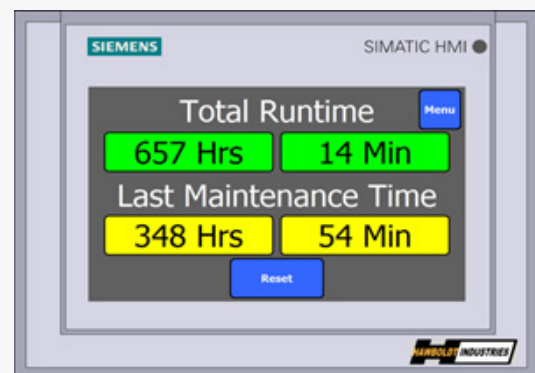
- ▷ Daylight readable marine grade HMI touch screen interface
- ▷ UNOLS compliant display set as default screen
- ▷ User preference data location fields on main screen
- ▷ Refresh rates for graphs and numerals may be set independently for readability



- ▷ Prospool parameter screen
- ▷ Capable of storing up to 10 different wire types
- ▷ Easily configurable for different wire types



- ▷ Input screen for tension, speed, auto render and cast depth setpoints
- ▷ User defined parameters for all alarm set points



- ▷ Winch maintenance screen with runtime counter and resettable time since last maintenance
- ▷ Upgradeable to include custom maintenance list specific to winch